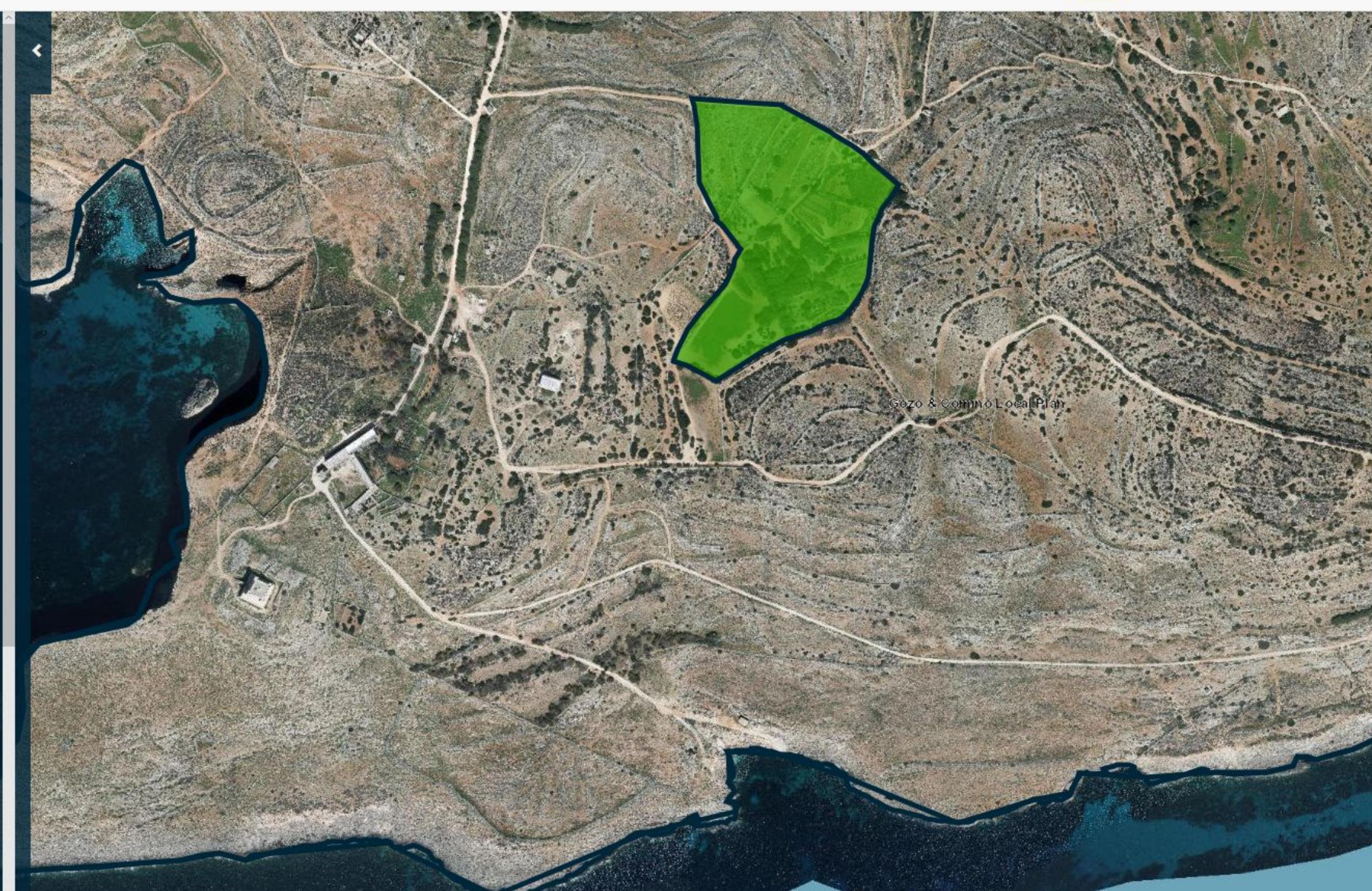


Table of Contents

- ≡ Basemaps
  - 📄 Basemap
  - 📄 Base Text
  - 📄 Indicative Scheme Alignment
- ≡ Imagery
  - 📄 Ortho Street Names
  - 📄 Orthos 1998
  - 📄 Orthos 2004
  - 📄 Orthos 2008
  - 📄 Orthos 2012
  - 📄 Orthos 2016
  - 📄 1968 Survey Sheets
  - 📄 Basemap Overlay 1:8000
- ≡ Potoruns
- ≡ CloudIsle 3D (Point Data 2012)
- ☐ ≡ Dev Applications (1:2500)
- ≡ Planning Constraints
  - ☐ ≡ Constraints
  - ☐ ≡ Groundwater Safeguard
    - 📄 100m Buffer zone
    - 📄 200m Buffer zone
    - 📄 300m Buffer zone
    - 📄 300m Buffer zone Merged
- ≡ Scheduling
- ≡ Protection
  - 📄 Listed Natural Heritage
- ≡ CORINE Land Cover (CLC)
- ≡ Topography
  - ≡ Administrative Boundary
  - 📄 Local Plan Boundaries
  - 📄 Council Boundaries
- ≡ Elevation Data
- ≡ Surveying
- ≡ Points of Interest



**Identify Case** - x

---

**Local Plan Boundaries**

Local Plan	Gozo & Comino
Policy Name	Local Plan

---

**Council Boundaries**

Name	GHAJNSIELEM
Locality Area in SqKm	7.17999983

---

**Tree Protection Area (TPA)**

Site Name	Il-Hazina (Kemmuna)
Legislation	L.N. 200 of 2011 & G.N. 473 of 2011
Longitude	14.33638
Latitude	36.01133728
Area (ha)	3.90216348
Contact Unit	Ecosystems Management Unit