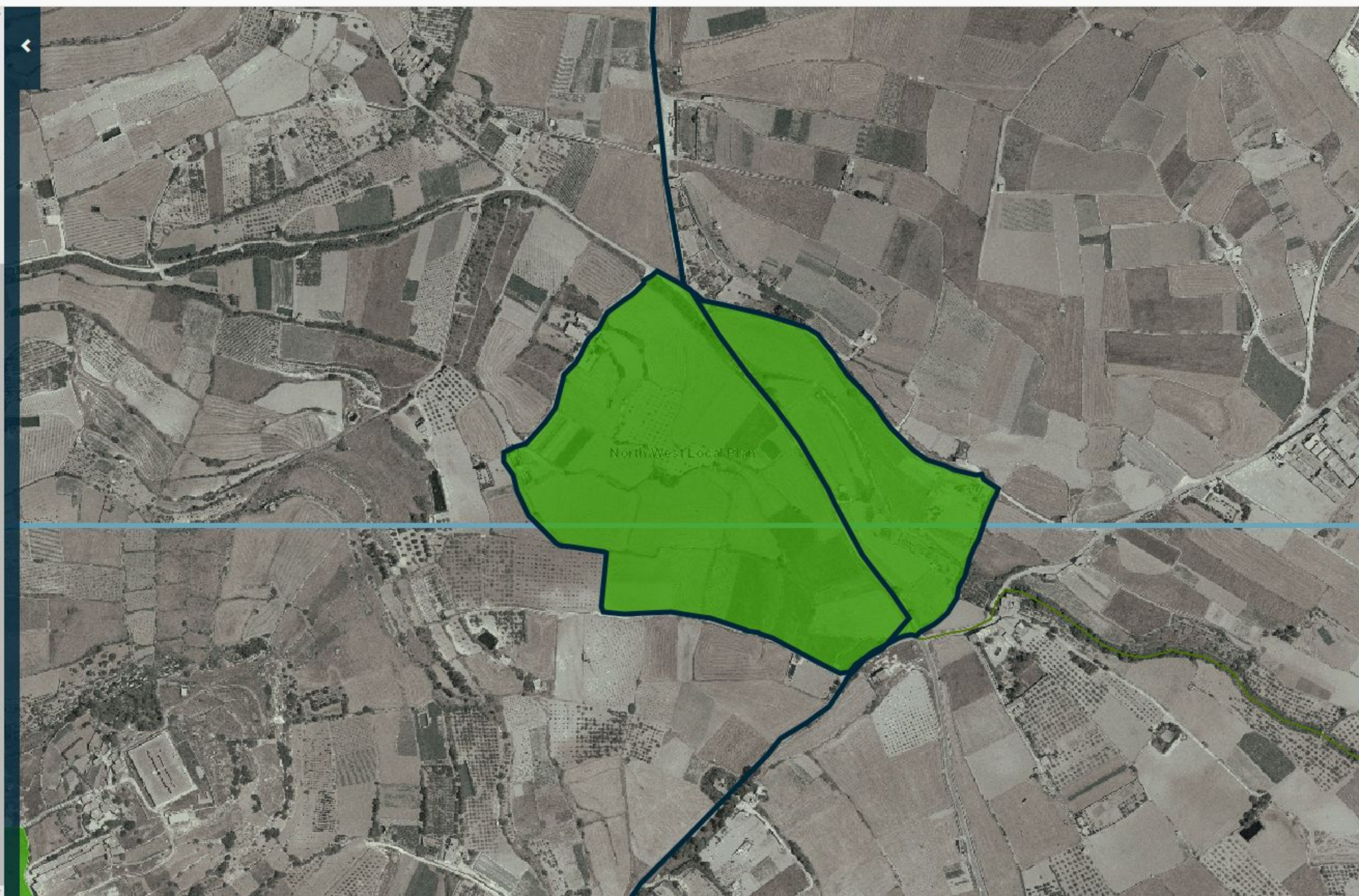


- Phototrans
- CloudIsle 3D (Point Data 2012)
- Dev Applications (1:2500)
- Planning Constraints
 - Constraints
 - Groundwater Safeguard
 - 100m Buffer zone
 - 200m Buffer zone
 - 300m Buffer zone
 - 300m Buffer zone Merged
- Scheduling
- Protection
 - Listed Natural Heritage
- CORINE Land Cover (CLC)
- Topography
 - Administrative Boundary
 - Local Plan Boundaries
 - Council Boundaries
- Elevation Data
- Surveying
- Points of Interest
- Environment Data
 - Environmental Apps & Permits
 - Environmental Assessments
 - Nature Protection App
 - Marine Data
 - Terrestrial Data
 - Inland Water Bodies
 - Bat Sites
 - Environment Protection
 - Natura2000
 - Special Area Conservation (SAC)
 - Special Protected Area (SPA)
 - Tree Protection Area (TPA)
 - Terrestrial Habitats
 - Restricted Trapping Zones



Identify Case

Local Plan Boundaries

Local Plan Policy Name	North West Local Plan
------------------------	-----------------------

Council Boundaries

Name	RABAT (Malta)
Locality Area in SqKm	26.60000038

Tree Protection Area (TPA)

Site Name	Ta' San Blas (I/o Ir-Rabat & Haz-Zebbug)
Legislation	L.N. 200 of 2011 & G.N. 473 of 2011
Longitude	14.41574669
Latitude	35.86969757
Area (ha)	12.15342355
Contact	Ecosystems