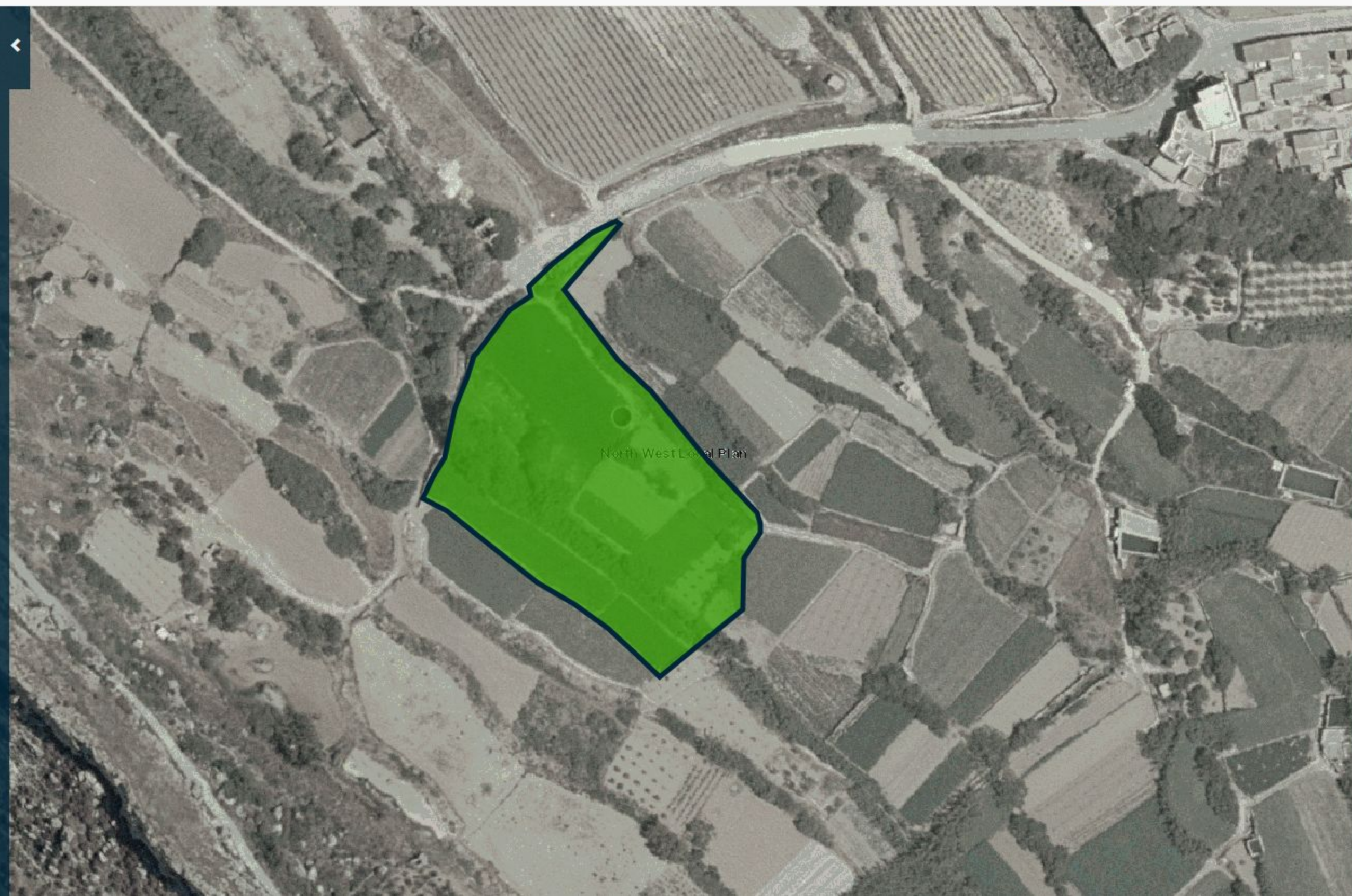


- Basemap Overlay 1:8000
- Photoruns
- Cloudsle 3D (Point Data 2012)
- Dev Applications (1:2500)
- Planning Constraints
  - Constraints
  - Groundwater Safeguard
  - 100m Buffer zone
  - 200m Buffer zone
  - 300m Buffer zone
  - 300m Buffer zone Merged
- Scheduling
- Protection
  - Listed Natural Heritage
- CORINE Land Cover (CLC)
- Topography
  - Administrative Boundary
  - Local Plan Boundaries
  - Council Boundaries
- Elevation Data
- Surveying
- Points of Interest
- Environment Data
  - Environmental Apps & Permits
  - Environmental Assessments
  - Nature Protection App
  - Marine Data
  - Terrestrial Data
    - Inland Water Bodies
    - Bat Sites
    - Environment Protection
    - Natura2000
    - Special Area Conservation (SAC)
    - Special Protected Area (SPA)
    - Tree Protection Area (TPA)
    - Terrestrial Habitats



**Identify Case** - x

---

**Local Plan Boundaries**

Local Plan Policy Name	North West Local Plan
------------------------	-----------------------

---

**Council Boundaries**

Name	RABAT (Malta)
Locality Area in SqKm	26.60000038

---

**Tree Protection Area (TPA)**

Site Name	Wied tal-Bahrija (l/o Rabat)
Legislation	L.N. 200 of 2011 & G.N. 473 of 2011
Longitude	14.34000492
Latitude	35.89544678
Area (ha)	0.47493034
Contact	Ecosystems