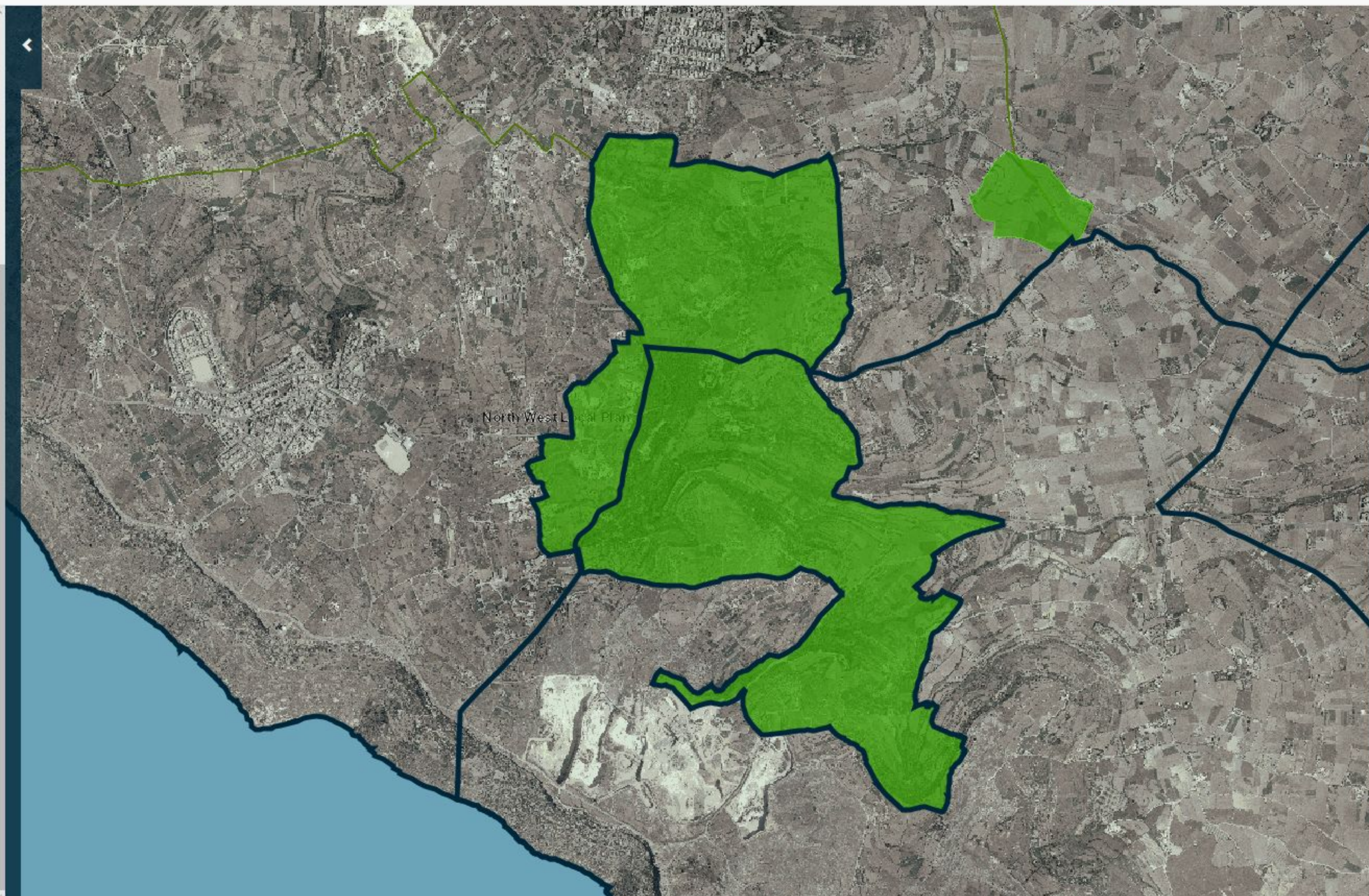


- Photographs
- Cloudlisle 3D (Point Data 2012)
- Dev Applications (1:2500)
- Planning Constraints
 - Constraints
 - Groundwater Safeguard
 - 100m Buffer zone
 - 200m Buffer zone
 - 300m Buffer zone
 - 300m Buffer zone Merged
- Scheduling
- Protection
 - Listed Natural Heritage
- CORINE Land Cover (CLC)
- Topography
 - Administrative Boundary
 - Local Plan Boundaries
 - Council Boundaries
- Elevation Data
- Surveying
- Points of Interest
- Environment Data
 - Environmental Apps & Permits
 - Environmental Assessments
 - Nature Protection App
- Marine Data
- Terrestrial Data
 - Inland Water Bodies
 - Bat Sites
 - Environment Protection
 - Natura2000
 - Special Area Conservation (SAC)
 - Special Protected Area (SPA)
 - Tree Protection Area (TPA)
 - Terrestrial Habitats
- Restricted Trapping Zones



Identify Case

Local Plan Boundaries

| | |
|------------------------|-----------------------|
| Local Plan Policy Name | North West Local Plan |
|------------------------|-----------------------|

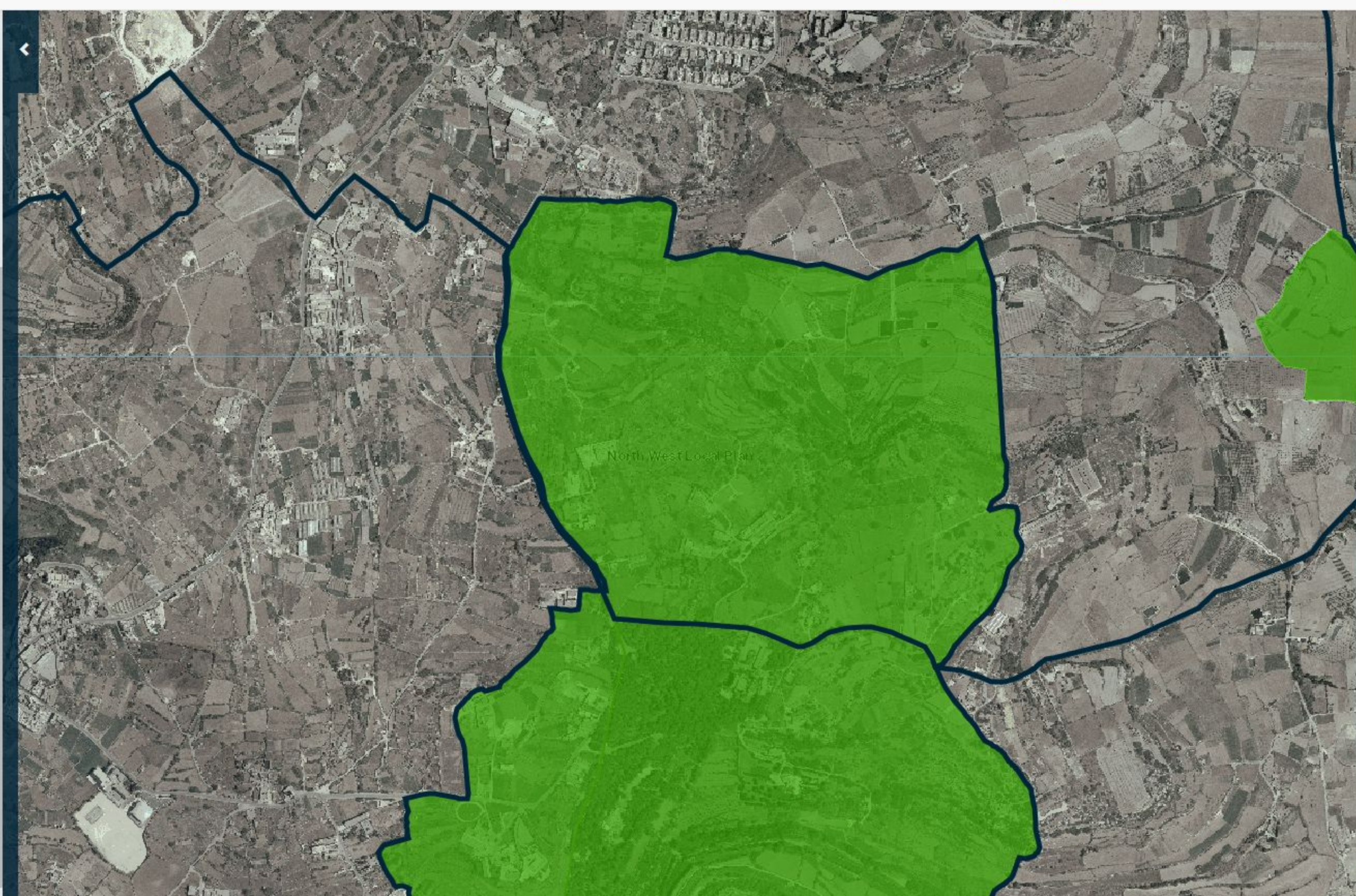
Council Boundaries

| | |
|-----------------------|-------------|
| Name | SIGGIEWI |
| Locality Area in SqKm | 19.87999916 |

Tree Protection Area (TPA)

| | |
|--------------|----------------------------------------------|
| Site Name | Gnien il-Kbir, Il-Buskett & Wied il-Girgenti |
| Legislation | L.N. 200 of 2011 & G.N. 473 of 2011 |
| Longitude | 14.40383911 |
| Latitude | 35.85926819 |
| Area (ha) | 244.71167388 |
| Contact Unit | Ecosystems Management Unit |

- Phototours
- CloudIsle 3D (Point Data 2012)
- Dev Applications (1:2500)
- Planning Constraints
 - Constraints
 - Groundwater Safeguard
 - 100m Buffer zone
 - 200m Buffer zone
 - 300m Buffer zone
 - 300m Buffer zone Merged
- Scheduling
- Protection
 - Listed Natural Heritage
- CORINE Land Cover (CLC)
- Topography
 - Administrative Boundary
 - Local Plan Boundaries
 - Council Boundaries
- Elevation Data
- Surveying
- Points of Interest
- Environment Data
 - Environmental Apps & Permits
 - Environmental Assessments
 - Nature Protection App
- Marine Data
- Terrestrial Data
 - Inland Water Bodies
 - Bat Sites
 - Environment Protection
 - Natura2000
 - Special Area Conservation (SAC)
 - Special Protected Area (SPA)
 - Tree Protection Area (TPA)
 - Terrestrial Habitats
- Restricted Trapping Zones



Identify Case - x

Local Plan Boundaries

| | |
|------------------------|-----------------------|
| Local Plan Policy Name | North West Local Plan |
|------------------------|-----------------------|

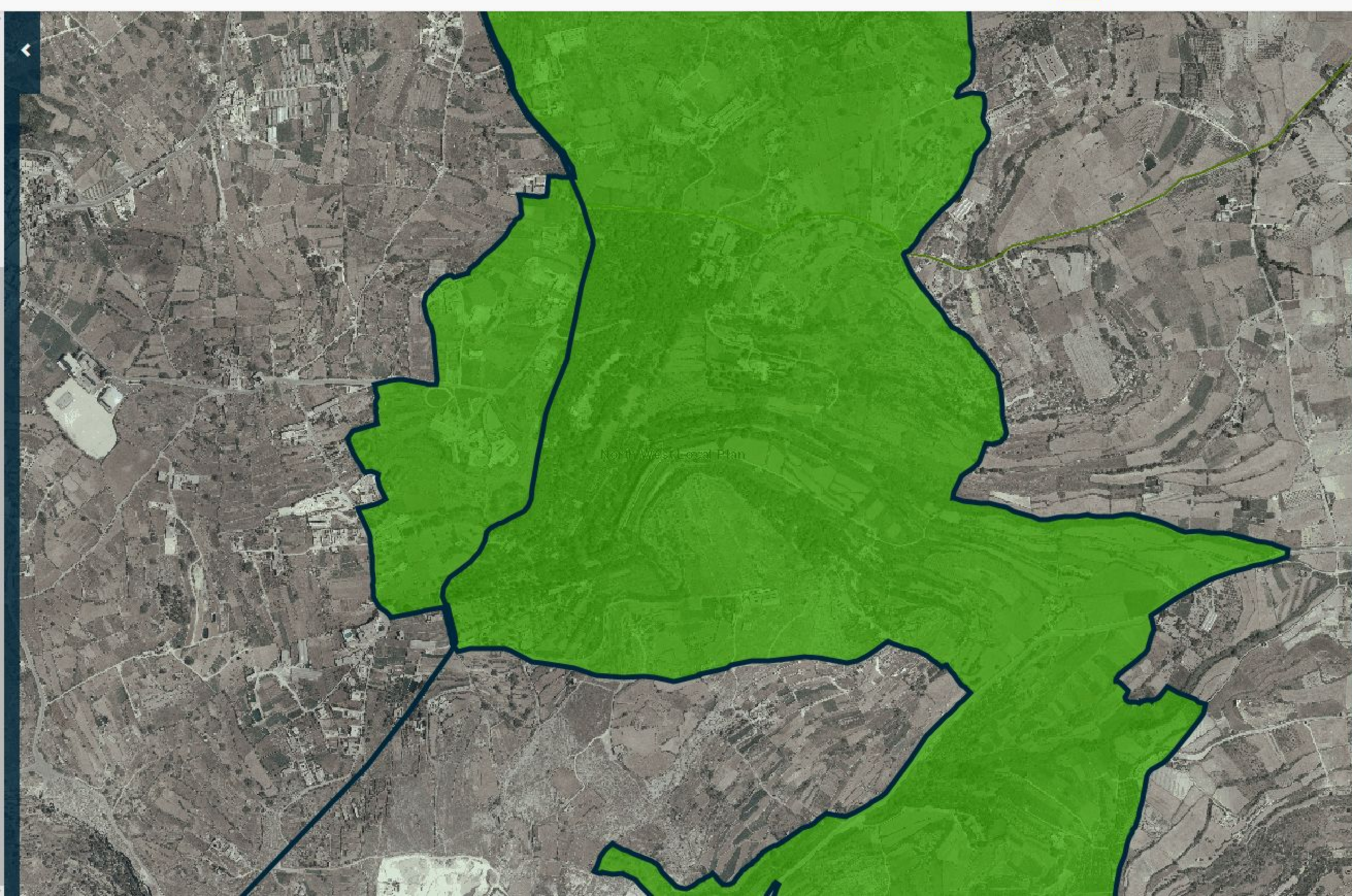
Council Boundaries

| | |
|-----------------------|---------------|
| Name | RABAT (Malta) |
| Locality Area in SqKm | 26.60000038 |

Tree Protection Area (TPA)

| | |
|-------------|----------------------------------------------|
| Site Name | Gnien il-Kbir, Il-Buskett & Wied il-Girgenti |
| Legislation | L.N. 200 of 2011 & G.N. 473 of 2011 |
| Longitude | 14.40383911 |
| Latitude | 35.85926819 |
| Area (ha) | 244.71167388 |
| Contact | Ecosystems |

- Phototrans
- CloudIsle 3D (Point Data 2012)
- Dev Applications (1:2500)
- Planning Constraints
 - Constraints
 - Groundwater Safeguard
 - 100m Buffer zone
 - 200m Buffer zone
 - 300m Buffer zone
 - 300m Buffer zone Merged
- Scheduling
- Protection
 - Listed Natural Heritage
- CORINE Land Cover (CLC)
- Topography
 - Administrative Boundary
 - Local Plan Boundaries
 - Council Boundaries
- Elevation Data
- Surveying
- Points of Interest
- Environment Data
 - Environmental Apps & Permits
 - Environmental Assessments
 - Nature Protection App
 - Marine Data
 - Terrestrial Data
 - Inland Water Bodies
 - Bat Sites
 - Environment Protection
 - Natura2000
 - Special Area Conservation (SAC)
 - Special Protected Area (SPA)
 - Tree Protection Area (TPA)
 - Terrestrial Habitats
 - Restricted Trapping Zones



Identify Case - x

Local Plan Boundaries

| | |
|------------------------|-----------------------|
| Local Plan Policy Name | North West Local Plan |
|------------------------|-----------------------|

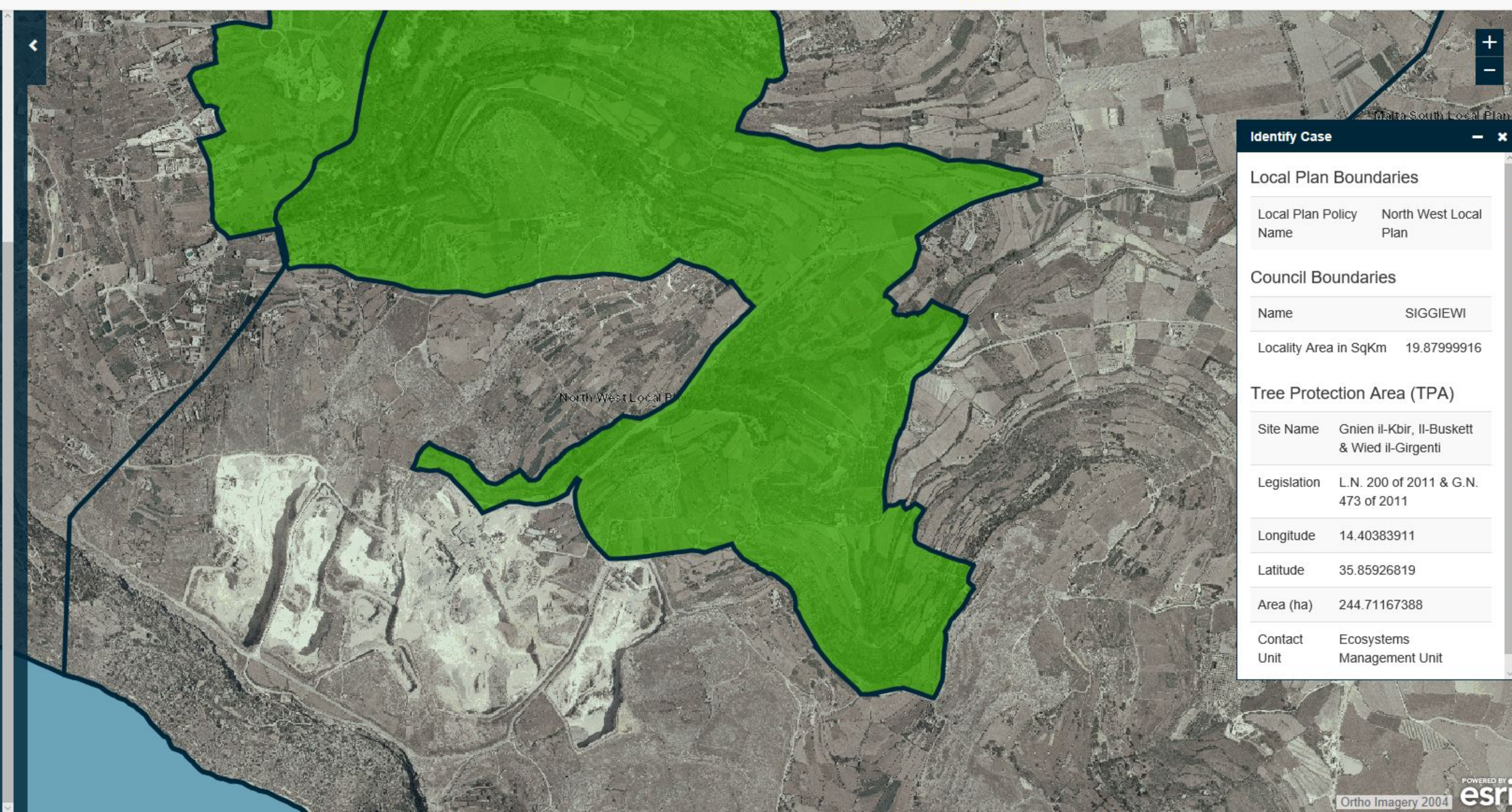
Council Boundaries

| | |
|-----------------------|------------|
| Name | DINGLI |
| Locality Area in SqKm | 5.67000008 |

Tree Protection Area (TPA)

| | |
|--------------|----------------------------------------------|
| Site Name | Gnien il-Kbir, Il-Buskett & Wied il-Girgenti |
| Legislation | L.N. 200 of 2011 & G.N. 473 of 2011 |
| Longitude | 14.40383911 |
| Latitude | 35.85926819 |
| Area (ha) | 244.71167388 |
| Contact Unit | Ecosystems Management Unit |

- Phototrans
- CloudIsle 3D (Point Data 2012)
- Dev Applications (1:2500)
- Planning Constraints
 - Constraints
 - Groundwater Safeguard
 - 100m Buffer zone
 - 200m Buffer zone
 - 300m Buffer zone
 - 300m Buffer zone Merged
- Scheduling
- Protection
 - Listed Natural Heritage
- CORINE Land Cover (CLC)
- Topography
 - Administrative Boundary
 - Local Plan Boundaries
 - Council Boundaries
- Elevation Data
- Surveying
- Points of Interest
- Environment Data
 - Environmental Apps & Permits
 - Environmental Assessments
 - Nature Protection App
- Marine Data
- Terrestrial Data
 - Inland Water Bodies
 - Bat Sites
 - Environment Protection
 - Natura2000
 - Special Area Conservation (SAC)
 - Special Protected Area (SPA)
 - Tree Protection Area (TPA)
 - Terrestrial Habitats
- Restricted Trapping Zones



Identify Case

Local Plan Boundaries

| | |
|------------------------|-----------------------|
| Local Plan Policy Name | North West Local Plan |
|------------------------|-----------------------|

Council Boundaries

| | |
|-----------------------|-------------|
| Name | SIGGIEWI |
| Locality Area in SqKm | 19.87999916 |

Tree Protection Area (TPA)

| | |
|--------------|----------------------------------------------|
| Site Name | Gnien il-Kbir, Il-Buskett & Wied il-Girgenti |
| Legislation | L.N. 200 of 2011 & G.N. 473 of 2011 |
| Longitude | 14.40383911 |
| Latitude | 35.85926819 |
| Area (ha) | 244.71167388 |
| Contact Unit | Ecosystems Management Unit |