



MINISTRY
OF AGRICULTURE
and RURAL DEVELOPMENT

of the SLOVAK REPUBLIC



FORESTS IN SLOVAKIA



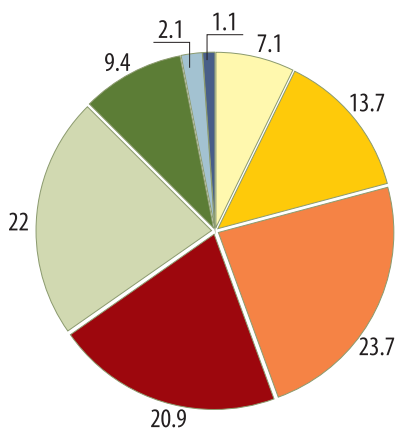
2014

Statement of 31st of December 2013

NATURAL CONDITIONS IN THE FORESTS IN SLOVAKIA

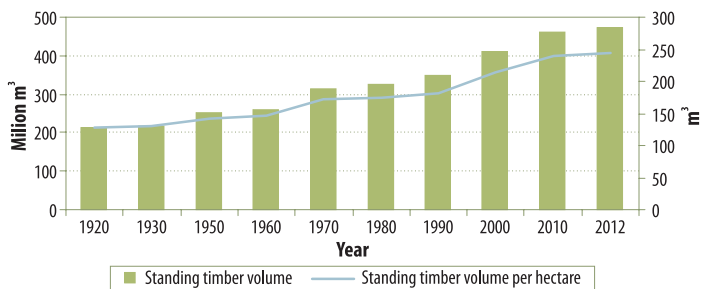
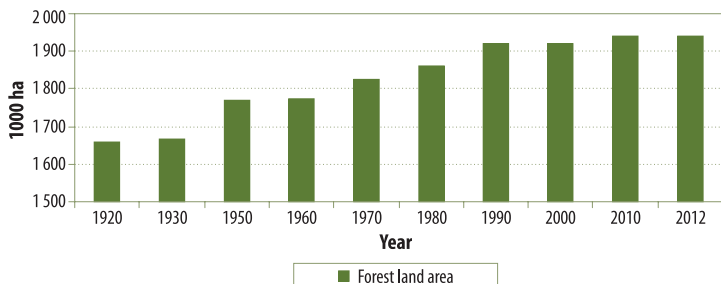
Area									Together
ha	138 605	265 551	460 052	405 052	427 417	183 192	40 387	21 265	1 941 521
%	7.1	13.7	23.7	20.9	22	9.4	2.1	1.1	100

Altitudinal vegetation zone:



DEVELOPMENT OF BASIC DATA ON FORESTS IN SLOVAKIA

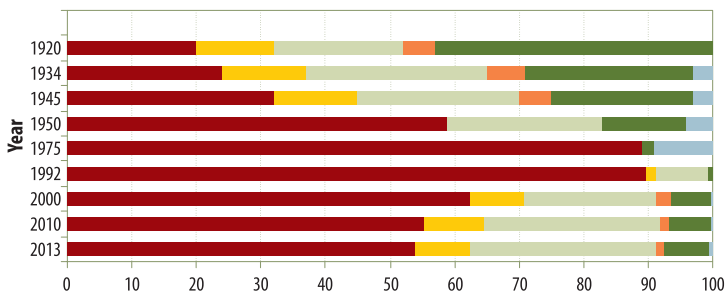
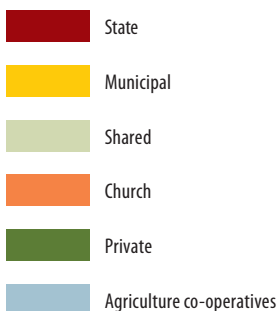
Indicators	Year										
	1920	1930	1950	1960	1970	1980	1990	2000	2010	2013	
1 000 ha	1 659	1 668	1 771	1 776	1 827	1 862	1 922	1 921	1 939	1 942	
%	33.9	34.1	36.1	36.2	37.3	38.0	39.2	39.2	41	41.1	
ha	0.55	0.50	0.51	0.45	0.40	0.37	0.36	0.36	0.36	0.37	
Mil. m ³	213.3	217.9	251.2	258.8	313.3	324.0	348.5	410.0	462	475.5	
m ³ /ha	129	131	142	146	171	174	181	215	239	246	
m ³	71	66	73	65	69	65	66	76	85	88	



DEVELOPMENT OF THE USE OF FORESTS IN SLOVAKIA

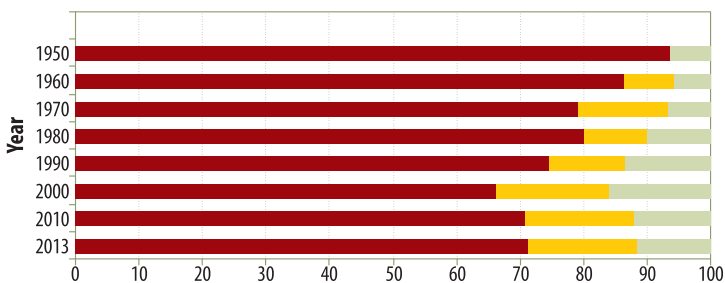
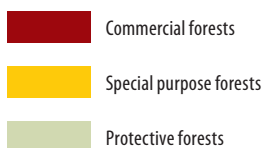
Forest manager (user)	Year								
	1920	1934	1945	1950	1975	1992	2000	2010	2013
	%								
State	20	24	32	59	89	89.8	62.4	55.4	53.9
Municipal	12	13	13	0	0	1.5	8.5	9.1	8.6
Shared	20	28	25	24	0	8.1	20.4	27.4	28.7
Church	5	6	5	0	0	0	2.4	1.4	1.3
Private	43	26	22	13	2	0.5	6.0	6.4	7.1
Agriculture co-operatives	0	3	3	4	9	0.1	0.3	0.3	0.4

Entities:



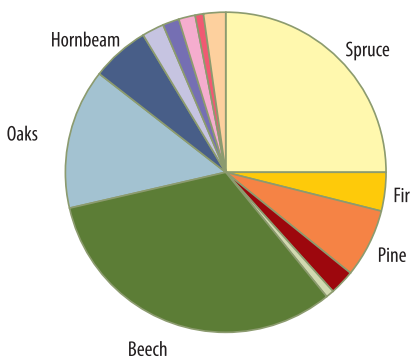
DEVELOPMENT OF FOREST CATEGORIES IN SLOVAKIA ACCORDING TO DOMINANT FUNCTIONS

Forest categories	Year							
	1950	1960	1970	1980	1990	2000	2010	2013
	%							
Commercial forests	93.5	86.4	79.1	80.0	74.5	66.3	70.7	71.2
Special purpose forests	0.0	7.9	14.3	10.1	12.0	17.7	17.1	17.1
Protective forests	6.5	5.7	6.6	9.9	13.5	16.0	12.2	11.7



TREE SPECIES IN THE FORESTS OF SLOVAKIA

Coniferous		%
	Spruce	24.1
	Fir	4
	Pine	6.9
	Larch	2.5
	Dwarf pine	1.1
	Coniferous	38.6

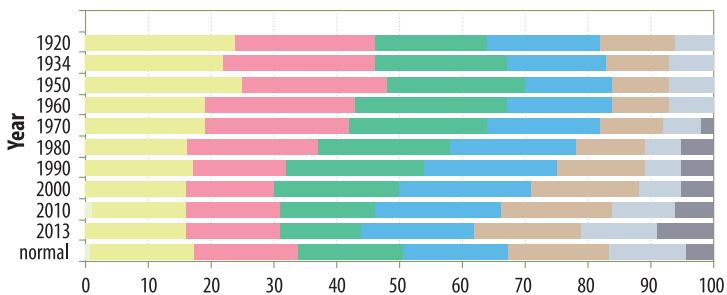


Broadleaved		%
	Beech	32.7
	Oaks	13.1
	Hornbeam	5.8
	Maple	2.3
	Ash	1.7
	Robinia	1.7
	Birch	1.5
	Other	2.6
	Broadleaved	61.4

STRUCTURE OF FORESTS IN SLOVAKIA ACCORDING TO AGE

Age classes	Year										
	1920	1934	1950	1960	1970	1980	1990	2000	2010	2013	Normal
	%										
0	0	0	0	0	0	0	0	1	1	0	0.8
1	24	22	25	19	19	16	17	15	15	16	16.6
2	22	24	23	24	23	21	15	15	15	15	16.6
3	18	21	22	24	22	21	22	15	15	13	16.6
4	18	16	14	17	18	20	21	20	20	18	16.6
5	12	10	9	9	10	11	14	18	18	17	16.3
6	6	7	7	7	6	6	6	10	10	12	12.1
7	0	0	0	0	2	5	5	6	6	9	4.4

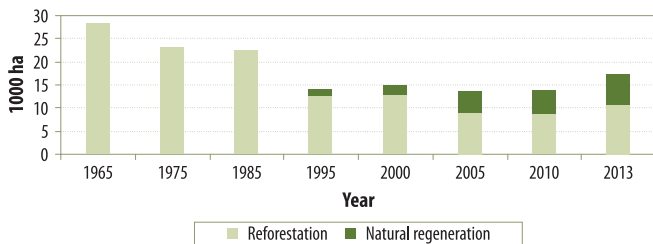
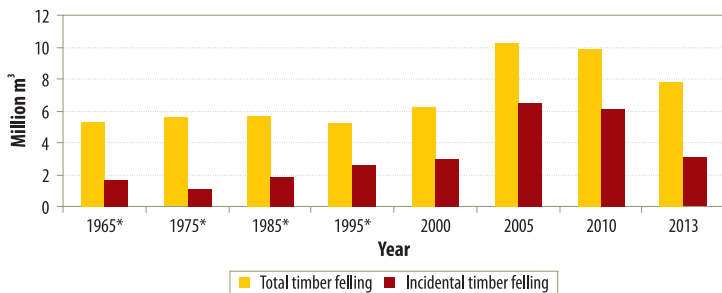
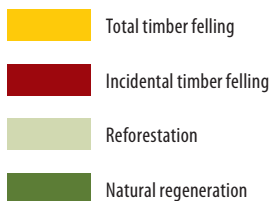
- 0. age class (unstocked area)
- 1. age class (1 – 20 years)
- 2. age class (21 – 40 years)
- 3. age class (41 – 60 years)
- 4. age class (61 – 80 years)
- 5. age class (81 – 100 years)
- 6. age class (101 – 120 years)
- 7. age class (120 years and more)



DEVELOPMENT OF INDICATORS OF MANAGEMENT IN THE FORESTS OF SLOVAKIA

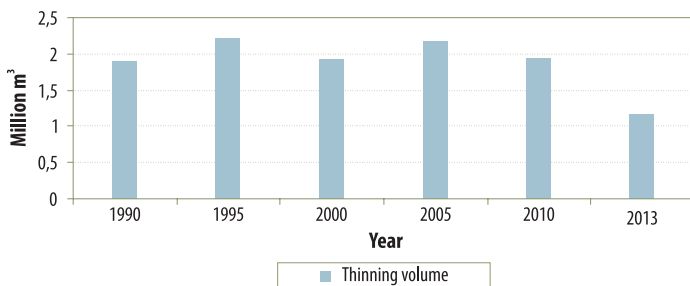
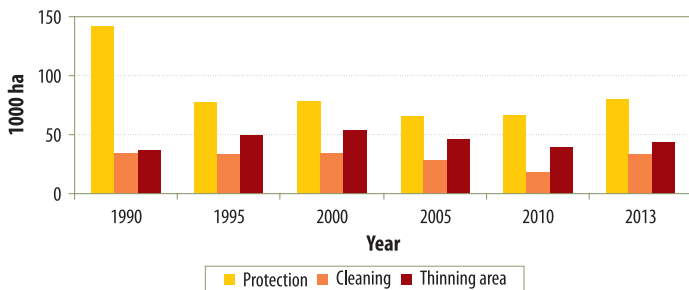
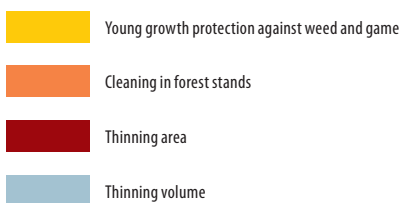
Indicators	Year							
	1965*	1975*	1985*	1995*	2000	2005	2010	2013
Mil. m ³	5.27	5.54	5.64	5.25	6.22	10.19	9.86	7.84
	1.67	1.12	1.90	2.65	3.02	6.53	6.16	3.11
ha	28 252	22 951	22 391	12 609	12 923	8 922	8 520	10 680
	0	0	0	1 407	2 134	4 582	5 460	6 530

*Data represent decennial average values.



DEVELOPMENT OF INDICATORS OF MANAGEMENT IN THE FORESTS OF SLOVAKIA

Indicators	Year					
	1990	1995	2000	2005	2010	2013
1 000 ha	141.92	77.57	78.32	65.72	79.50	79.29
	34.14	32.89	34.94	29.08	32.84	30.94
	37.14	50.24	53.94	46.07	44.32	42.2
Mil. m ³	1.90	2.21	1.93	2.16	1.17	1.14

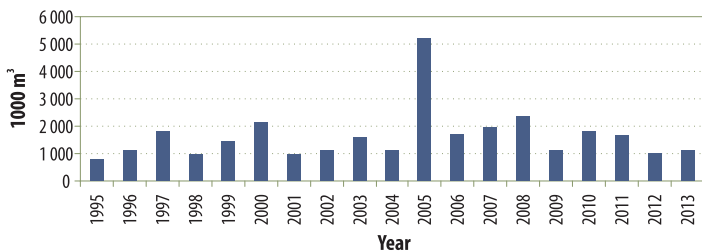


DEVELOPMENT OF FOREST DAMAGE IN SLOVAKIA

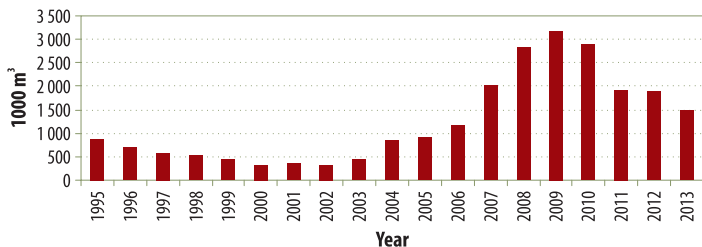
Proportion of incidental felling	Year									
	1995	1996	1997	1998	1999	2000	2001	2002	2003	
	%									
	56.1	58.9	57.1	41.7	45.5	48.6	39.5	34.5	41.3	

Proportion of incidental felling	Year									
	2004	2005	2006	2007	2008	2009	2010	2011	2012	2013
	%									
	40.1	64.0	51.0	56.2	64.6	60.4	62.5	52.7	42.6	39.7

 Proportion of incidental felling in the total annual felling



 Incidental felling caused by wind



 Incidental felling caused by bark beetles and woodborers

DEVELOPMENT OF HEALTH CONDITION OF THE FOREST IN SLOVAKIA

Defoliation classes		Year						
		1987	1990	1995	2000	2005	2010	2013
		%						
0 (0 – 10%)	Coniferous	11	14	8	6	6	6	9
	Broadleaved	26	23	19	12	21	12	11
1 (11 – 25%)	Coniferous	36	30	40	48	59	48	48
	Broadleaved	47	45	46	55	65	55	46
2 (26 – 60%)	Coniferous	41	47	46	44	33	44	42
	Broadleaved	22	25	32	32	13	32	42
3 (61 – 99%)	Coniferous	11	8	5	2	2	2	1
	Broadleaved	5	5	2	1	1	1	1
4 (100%)	Coniferous	1	1	1	0	0	0	0
	Broadleaved	0	2	1	0	0	0	0

Defoliation class:

0 (0 – 10%)

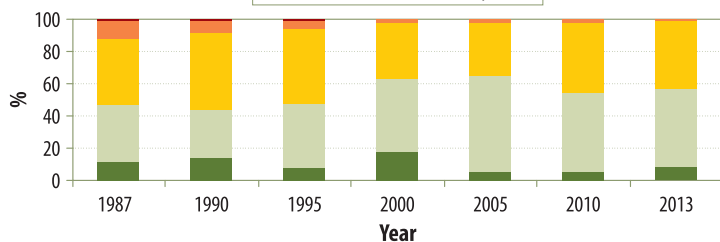
3 (61 – 99%)

1 (11 – 25%)

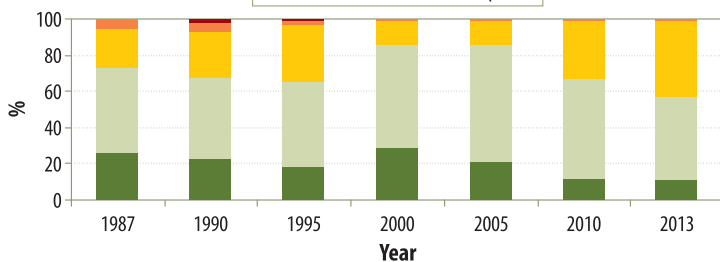
4 (100%)

2 (26 – 60%)

Defoliation of coniferous tree species



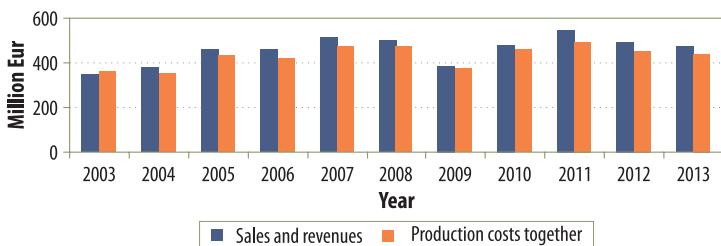
Defoliation of broadleaved tree species



DEVELOPMENT OF INDICATORS OF THE FOREST ECONOMY – SALES, REVENUES AND EXPENSES

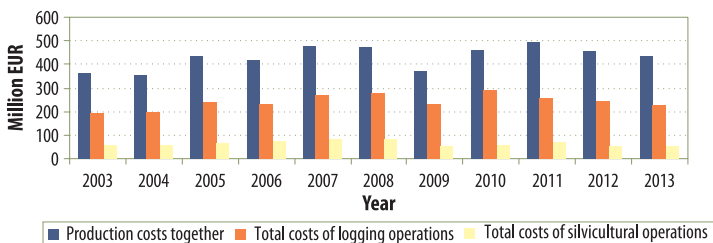
Indicators	Year										
	2003	2004	2005	2006	2007	2008	2009	2010	2011	2012	2013
	Million EUR										
Sales and revenues in current prices	350	381	457	459	511	502	390	479	544	494	471
There of sales for timber in current prices	277	314	377	364	405	405	310	377	433	392	385

- Sales and revenues in current prices
- There of sales for timber in current prices



Indicators	Year										
	2003	2004	2005	2006	2007	2008	2009	2010	2011	2012	2013
	Million EUR										
Production costs together in current prices	359	353	434	420	476	471	373	461	496	454	439
There of total costs of logging operations in current prices	192	197	238	235	266	279	231	293	256	243	225
There of total costs of silvicultural operations in current prices	58	57	63	73	82	83	52	58	70	54	53

- Production costs together in current prices
- There of total costs of logging operations in current prices
- There of total costs of silvicultural operations in current prices



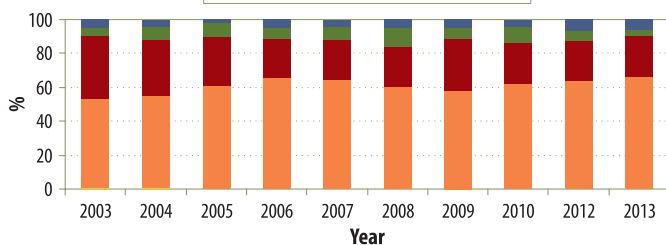
DEVELOPMENT OF INDICATORS OF THE FOREST ECONOMY – TIMBER ASSORTMENT PROPORTION

Proportion of timber assortments	Year										
	2003	2004	2005	2006	2007	2008	2009	2010	2011	2012	2013
	%										
Coniferous	0.63	0.46	0.11	0.20	0.21	0.12	0.14	0.04	0.04	0.04	0.27
	52.29	54.47	61.26	65.51	64.27	60.10	57.72	61.63	63.75	64.14	65.55
	37.3	33.13	28.35	22.8	23.24	23.29	30.54	24.69	19.99	23.25	24.64
	5.01	8.1	7.9	7.06	8.10	11.97	6.52	9.54	10.88	5.75	2.38
	4.77	3.84	2.38	4.43	4.18	4.52	5.08	4.10	5.34	6.80	7.16
Broadleaved	1.08	1.47	1.43	1.30	0.24	0.90	0.50	0.61	0.61	0.72	0.76
	23.99	26.68	31.88	38.29	64.27	38.57	33.04	39.10	38.90	37.24	38.14
	65.7	64.29	60.58	51.01	23.20	52.43	57.39	53.28	53.51	53.40	52.63
	4.43	2.9	1.27	1.35	8.08	0.47	0.82	0.32	0.26	0.77	0.75
	4.8	4.65	4.84	8.05	4.21	7.63	8.25	6.69	6.72	7.87	7.72

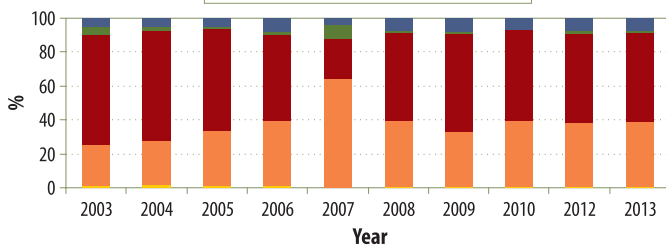
Proportion of timber assortments



Deliveries of coniferous by timber assortments



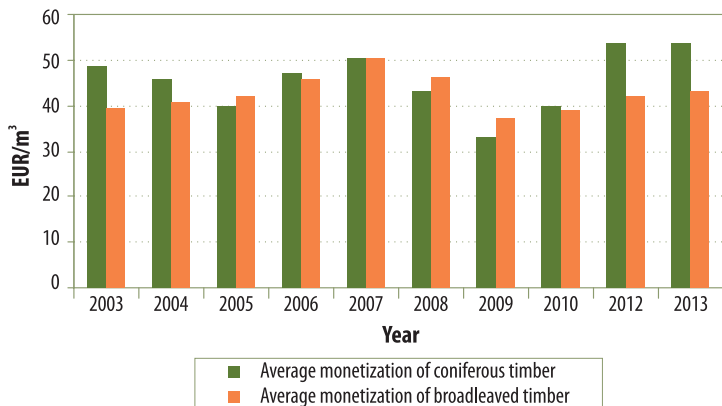
Deliveries of broadleaved by timber assortments



DEVELOPMENT OF INDICATORS OF THE FOREST ECONOMY – WOOD REALIZATION

Indicators	Year										
	2003	2004	2005	2006	2007	2008	2009	2010	2011	2012	2013
	EUR/m ³										
	48.73	45.84	39.77	47.30	50.26	43.05	32.96	39.64	51.46	53.80	53.62
	39.43	40.89	42.26	45.94	50.32	46.47	37.14	38.93	41.72	42.02	43.06
	44.31	43.65	40.60	46.77	50.29	44.18	34.26	39.40	47.46	48.34	48.36

- Average monetization of coniferous timber in current prices
- Average monetization of broadleaved timber in current prices
- Average timber monetization in current prices



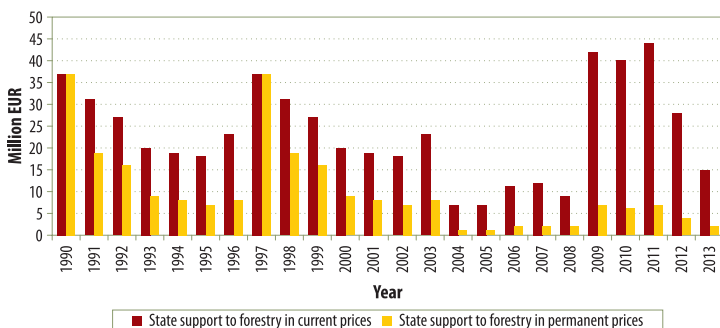
DEVELOPMENT OF ECONOMIC INDICATORS IN FORESTRY – STATE SUPPORT

State support for forestry	Year							
	1990	1991	1992	1993	1994	1995	1996	1997
	Million EUR							
	37	31	27	20	19	18	23	17
	37	19	16	9	8	7	8	6

State support for forestry	Year							
	1998	1999	2000	2001	2002	2003	2004	2005
	Million EUR							
	23	16	19	20	17	12	7	7
	7	4	5	5	4	2	1	1

State support for forestry	Year							
	2006	2007	2008	2009	2010	2011	2012	2013
	Million EUR							
	11	12	9	42	40	44	28	15
	2	2	2	7	6	7	4	2

- State support to forestry in current prices
- State support to forestry in permanent prices



DEVELOPMENT OF ECONOMIC INDICATORS IN FORESTRY – ECONOMIC RESULT

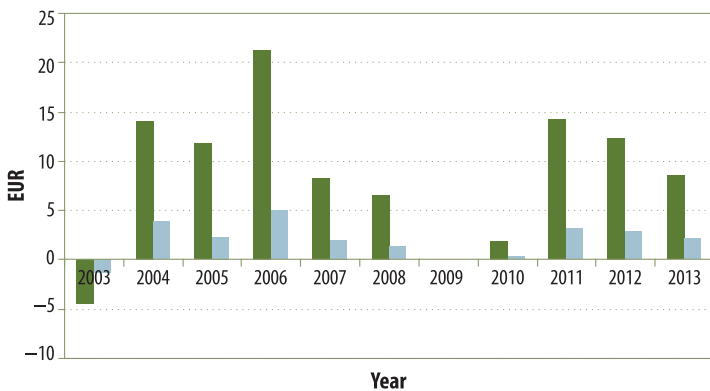
Indicators	Year										
	2003	2004	2005	2006	2007	2008	2009	2010	2011	2012	2013
	EUR										
	-4.51	14.11	11.88	21.38	8.33	6.64	0.12	1.91	14.21	12.35	8.61
	-1.36	3.88	2.32	5.05	1.99	1.36	0.02	0.36	3.11	2.94	2.19



Economic result of the subjects in the forestry of SR in EUR per 1 ha of forest



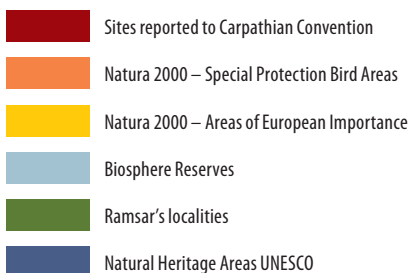
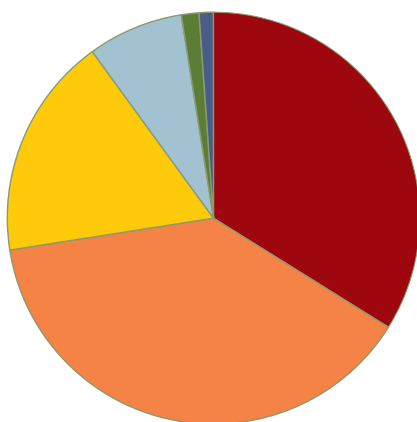
Economic result of the subjects in the forestry of SR in EUR per 1 m³ of logging



PROTECTED AREAS DECLARED BASED ON IMPLEMENTATION OF INTERNATIONAL COMMITMENTS

Territory	Number	Area [ha]*
Biosphere Reserves	4	247 213
Ramsar's localities	14	42 458
Natural Heritage Areas UNESCO	2	38 363
Natura 2000 – Special Protection Bird Areas	41	1 310 607
Natura 2000 – Areas of European Importance	473	583 370
Sites reported to Carpathian Convention (national protected areas over 100 ha)	180	1 126 560
Total	714	3 348 571

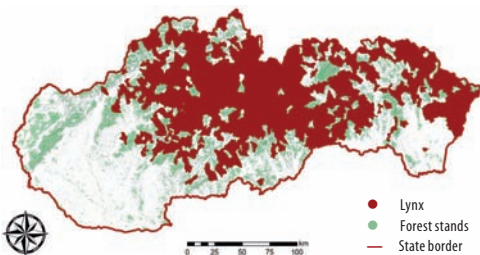
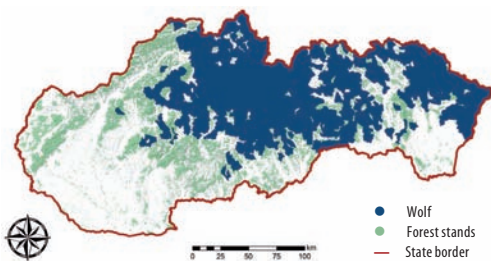
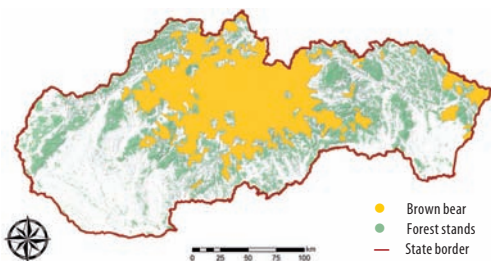
*Area in ha without mutual overlapping of the areas.



ABUNDANCE OF GAME IN SLOVAKIA IN 2013

Kind of game	Number
Red deer	62 784
Roe deer	108 955
Wild boar	40 941
Fallow deer	14 410
Mouflon	13 524
Brown hare	175 423
Pheasant	159 018
Partridge	6 128

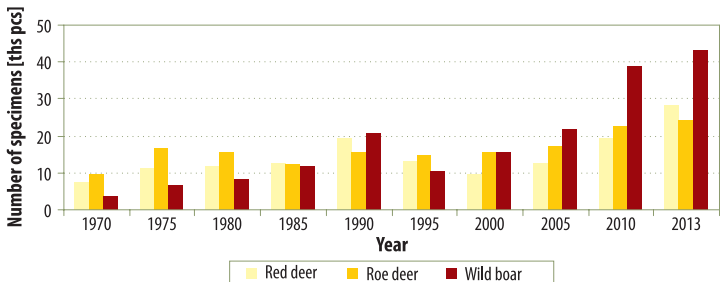
Kind of game	Number
Capercaillie	1 166
Black grouse	780
Hazel grouse	3 286
Chamois	1 156
Brown bear	2 069
Wolf	2 102
Lynx	1 717
Wild cat	3 212



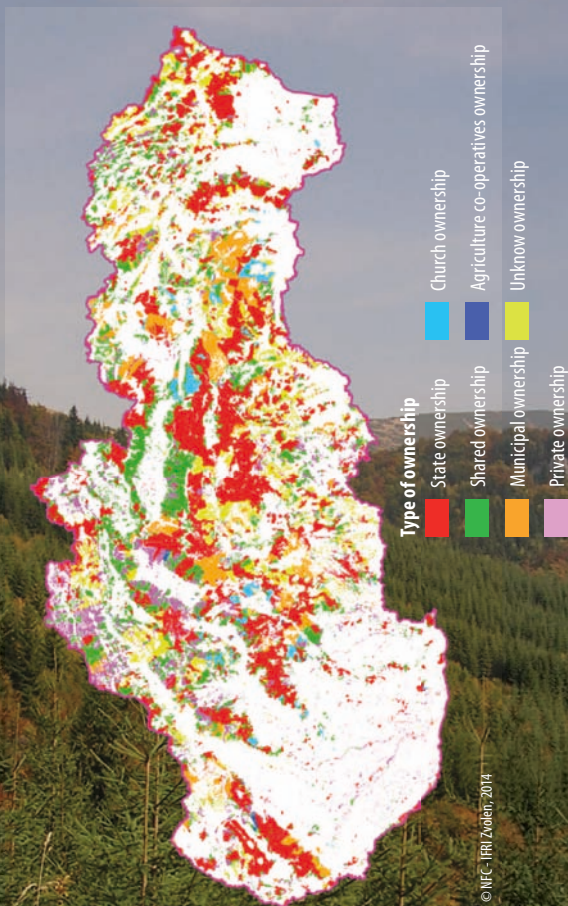
DEVELOPMENT OF GAME BAGS IN SLOVAKIA

Year	1970	1975	1980	1985	1990	1995	2000	2005	2010	2013
Kind of game	Number of shoted or trapped individuals									
Red deer	7 650	10 990	11 770	12 710	19 370	12 910	9 650	12 771	19 418	28 108
Roe deer	9 520	16 560	15 650	12 440	15 540	14 790	15 470	17 174	22 453	24 094
Wild boar	3 550	6 720	8 490	11 860	20 570	10 360	15 450	21 939	39 045	43 431
Fallow deer	310	420	480	880	1 690	980	1 350	2 325	4 312	6 799
Mouflon	220	460	720	1 070	1 810	1 640	1 810	2 603	4 567	4 721
Brown hare	246 380	97 640	76 570	56 550	63 840	48 920	32 050	32 314	14 525	12 716
Pheasant	93 130	181 580	87 320	64 890	60 170	105 200	90 260	130 111	91 811	72 940
Partridge	49 700	20 520	10	0	0	60	270	36	419	704
Wild duck	26 610	26 880	25 250	21 160	22 500	16 420	18 390	8 658	18 276	17 572
Wild rabbit	2 130	4 310	2 700	750	280	30	20	0	0	0
Brown bear	15	24	21	36	53	61	31	35	47	20
Wolf	40	37	36	113	115	157	118	74	149	28
Lynx	83	67	64	81	127	67	0	0	0	0
Wild cat	796	536	228	150	160	216	0	0	0	0
Fox	9 260	9 030	13 330	13 130	14 130	15 950	15 560	17 354	17 433	15 873
Brown bear	15	24	21	36	53	61	31	35	47	20
Wolf	40	37	36	113	115	157	118	74	149	28
Lynx	83	67	64	81	127	67	0	0	0	0
Wild cat	796	536	228	150	160	216	0	0	0	0
Fox	9 260	9 030	13 330	13 130	14 130	15 950	15 560	17 354	17 433	15 873
Capercaillie	94	79	36	34	0	5	0	0	0	0
Black grouse	38	43	18	1	0	0	0	0	0	0
Hazel grouse	343	166	30	29	11	5	1	5	5	2
Chamois	4	8	1	1	4	3	7	8	7	12

* Alpine origin.



FOREST LAND OWNERSHIP IN SLOVAKIA



Published by: Ministry of Agriculture and Rural Development of the Slovak Republic, Bratislava

Editor: Ing. Martin Moravčík, CSc.

Foto cover: Ing. Vladimír Šebeň, PhD.

Designed by: Ľubica Pílná, Ľuboš Frič

Copyright: © Ministry of Agriculture and Rural Development of the Slovak Republic, Bratislava 2014